



NEX C56 VC

ATX Gaming Case

\$ **59**.99 **BLACK**

\$ **64**.99 **WHITE**

SLEEK & ELEGANT APPEARANCE

Three-sided tempered glass pillar-free panoramic chassis, offering 270° all-round viewing effect.

EXCELLENT COOLING EXPANDABILITY

Supports up to 7 pcs 120mm fans, rear position compatible with 140mm fans. Pre-installed 4 PWM-controlled ARGB fans. All fan brackets feature 12° deflection design for optimized airflow circulation.

VERTICAL GPU MOUNT SUPPORT

Comes with dedicated vertical GPU bracket to fully showcase high-end graphics cards. (PCIe extension cable sold separately)

COMPATIBILITY & SPECIFICATIONS

Supports ATX motherboard max, fits 360mm top radiator, air coolers up to 183mm height and graphics cards up to 425mm in length.

PSU: Max 200mm ATX power supply

Storage: 2×3.5" HDD + 2×2.5" SSD

Ports: 1×20Gbps Type-C, 2×5Gbps USB3.0 Type-A, 1×Audio Port

XERON



NEX C53

ATX Gaming Case

\$ **64.99** BLACK

\$ **69.99** WHITE

SLEEK & ELEGANT APPEARANCE

Pillar-free panoramic chassis with dual tempered glass panels and double-layer top cover, featuring solid and stable construction.

POWERFUL COOLING PERFORMANCE

Supports up to seven 120mm fans. Four PWM-adjustable ARGB fans come pre-installed, and the bottom fan bracket allows angle adjustment.

PREMIUM INSTALLATION EXPERIENCE

Spacious rear cable management space, compatible with BTF back-connect motherboards for hassle-free assembly.

COMPATIBILITY & SPECIFICATIONS

Supports ATX motherboard max, fits 360mm top radiator, air coolers up to 180mm height and graphics cards up to 425mm in length.

PSU: Max 160mm ATX power supply

Storage: 1×3.5" HDD + 1×2.5" SSD

Ports: 1×20Gbps Type-C, 2×5Gbps USB3.0 Type-A, 1×Audio Port



NEX C33

MATX Gaming Case

\$ **59**.99 **BLACK**

\$ **64**.99 **WHITE**

SLEEK & ELEGANT APPEARANCE

Dual tempered glass pillar-free panoramic chassis with double-layer top cover, stable and sturdy structure.

EXCELLENT COOLING EXPANDABILITY

Supports up to 7pcs 120mm fans, pre-installed 4 PWM-adjustable ARGB fans.

SUPERIOR INSTALLATION EXPERIENCE

Extra-large rear cable management space, compatible with BTF back-plug motherboards for easier assembly.

COMPATIBILITY & SPECIFICATIONS

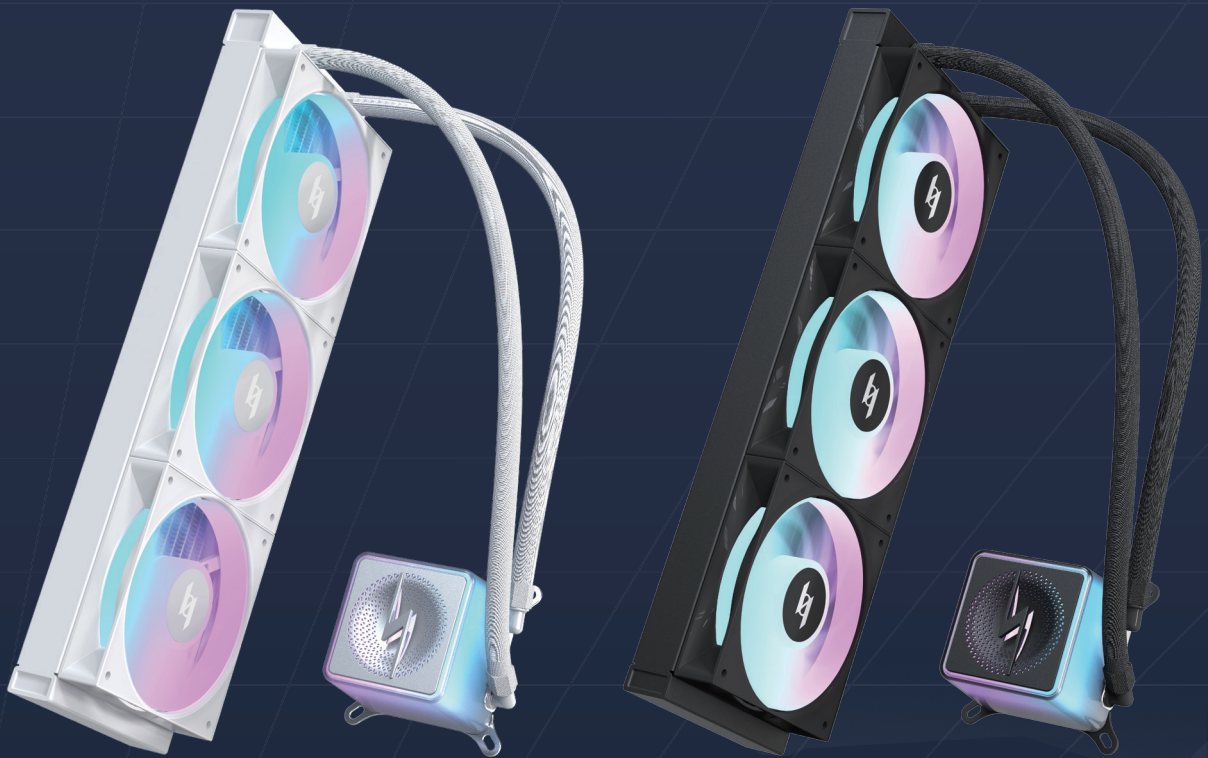
Supports MATX motherboard max, fits 360mm top radiator, air coolers up to 180mm height and graphics cards up to 425mm in length.

PSU: Max 140mm ATX power supply

Storage: 1×3.5" HDD + 1×2.5" SSD

Ports: 1×20Gbps Type-C, 2×5Gbps USB3.0 Type-A, 1×Audio Port

XERON



NEX L360 ARGB

ARGB Liquid CPU Cooler

\$ **69**.00 BLACK

\$ **74**.99 WHITE

DREAMY RGB APPEARANCE

Fully ARGB pump with stunning lighting effects.

EASY INSTALLATION

Special plug-in pump fasteners and daisy-chain fan wiring simplify assembly effortlessly.

QUIET & POWERFUL PERFORMANCE

Patented silent pump paired with high-performance annular ARGB fans, reducing noise while delivering reliable cooling capacity.

XERON



LUX L360 VISION

Curved OLED Liquid CPU Cooler

\$199

CLEAR LARGE DISPLAY

6.67-inch curved OLED screen with AG glass cover, low reflection and high durability.

UNIQUE VISUAL EXPERIENCE

Based on classic curved naked-eye 3D themes, added infinite mirror reflection design to break visual boundaries.

POWERFUL & SILENT PERFORMANCE

Low-noise high-performance pump paired with 2400RPM dual-curve fans, supporting up to 320W TDP heat dissipation.

 X E R O N



MAX A62

Dual-tower CPU Cooler

\$ 59.00

ELEGANT DESIGN

Aluminum magnetic top cover presents distinctive layered texture.

QUIET & POWERFUL PERFORMANCE

High-performance fans with dual-curve blades deliver 280W TDP at only 1800 RPM.

EXQUISITE HEAT SINK STRUCTURE

Dual-tower six heat pipes with full soldering craft ensure excellent heat conduction efficiency.

XERON



MAX F120

120mm Non-RGB Fan

\$ **6**.90 BLACK

\$ **7**.90 WHITE

SUPERIOR AERODYNAMIC PERFORMANCE

Dual-curve fan blades adapt to diverse operating conditions.

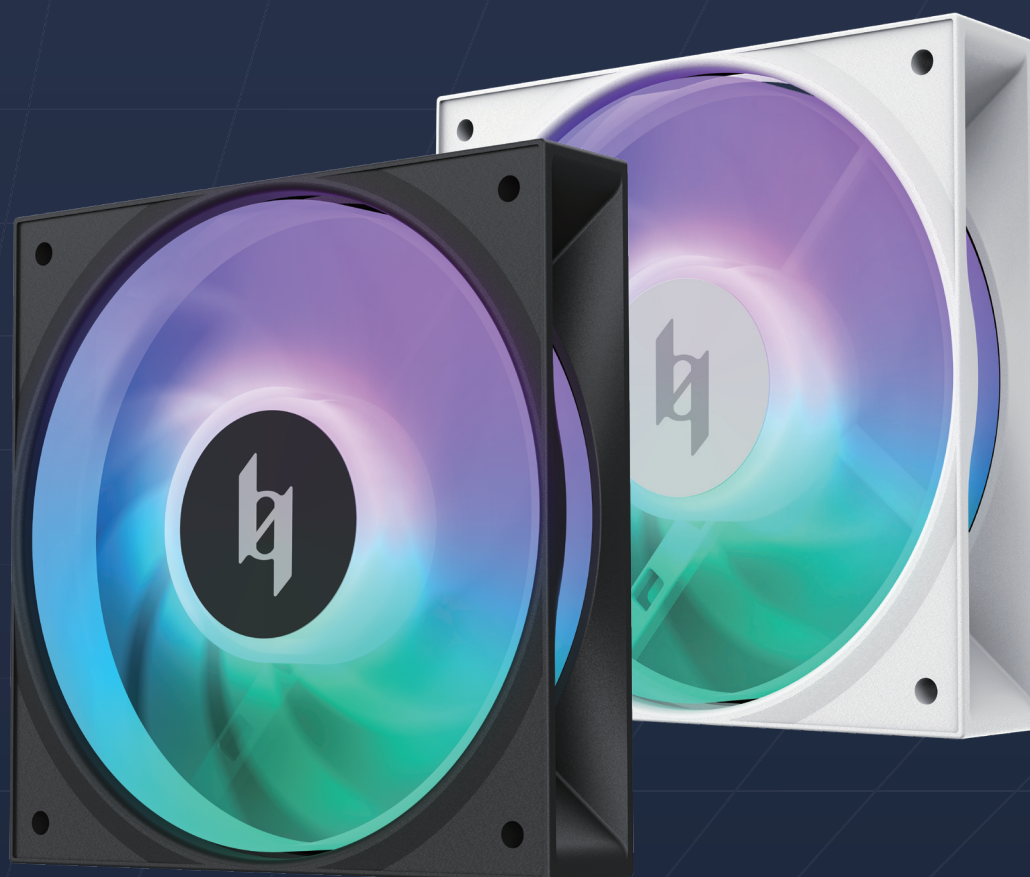
NOISE REDUCTION DESIGN

Noise optimization prioritized. Unique blade root and stator pressure relief grooves cut turbulence.

NEAT CABLE MANAGEMENT

One-cable design keeps wiring tidy.

XERON



NEX F120A / NEX F120RA

120mm ARGB Fan

SINGLE
\$ 4.99

3-IN-1
\$ 12.99

MINIMALIST DESIGN

Stylish and streamlined outlook.

OPTIMIZED AERODYNAMICS

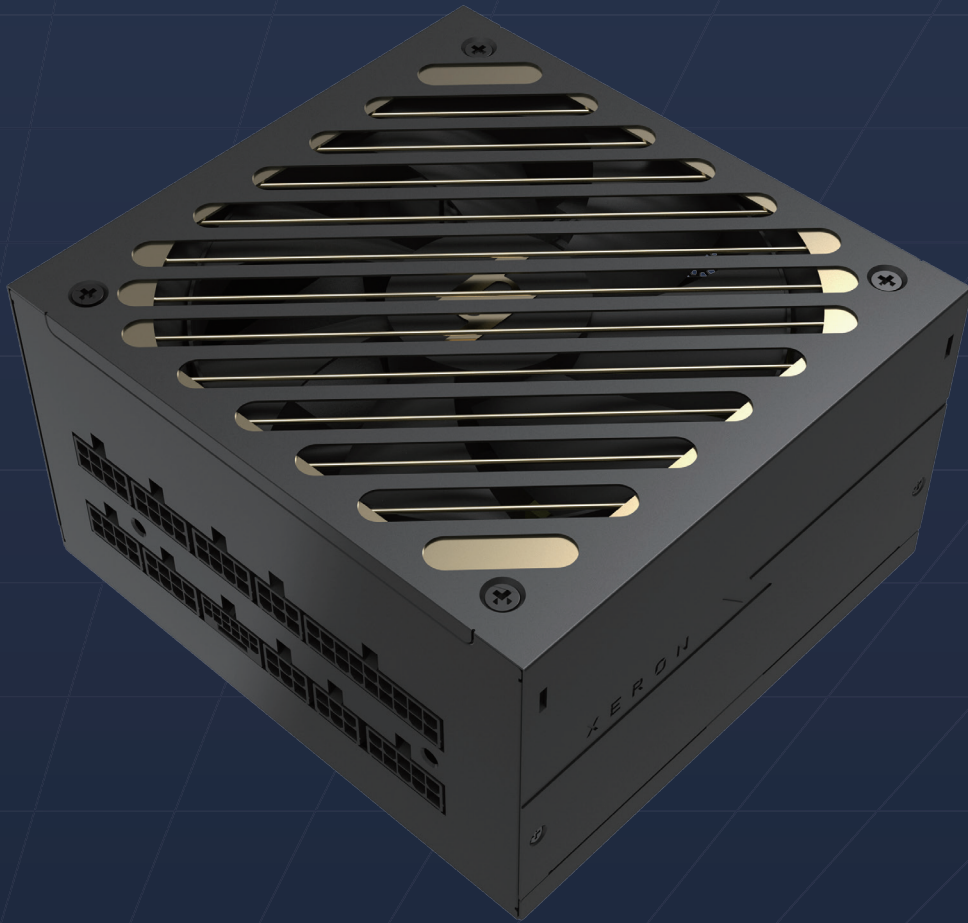
Integrated blades with side hollow cutouts, showcasing RGB lighting while preventing air leakage.

CONVENIENT CABLE MANAGEMENT

Simplified one-cable layout for tidy wiring.

WIDE COMPATIBILITY

Forward and reverse blades optional, fits various installation positions.



LUX PT SERIES

Titanium Full Modular ATX 3.1 PSU

750W / 850W / 1000W / 1200W

ENERGY SAVING & HIGH EFFICIENCY

80 PLUS / PPLP Titanium Certified.

PREMIUM COMPONENTS

Full Japanese capacitors for extended service life. Pure copper cables protect hardware safely.

ADVANCED ARCHITECTURE

Bridge-less APFC Circuit + Half-Bridge LLC + D2D. (750W-1000W)

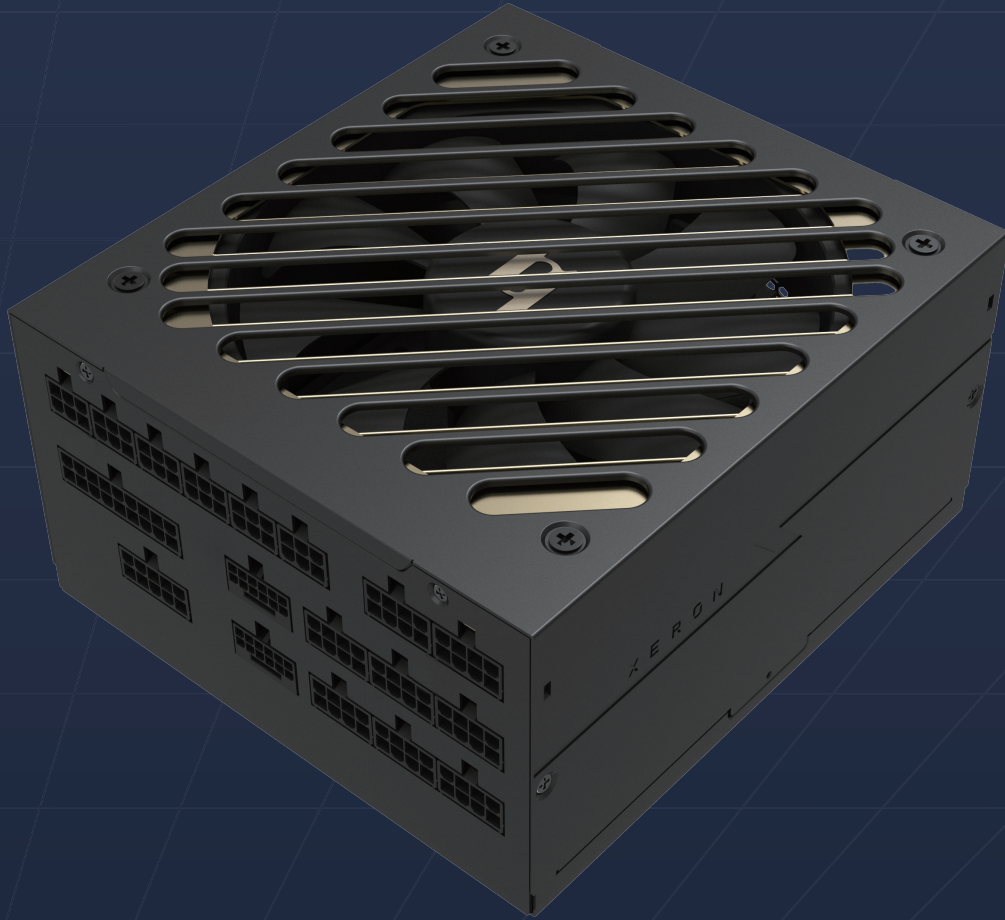
Bridge-less APFC Circuit + FULL-Bridge LLC + D2D. (1200W)

COMPACT DIMENSION

Only 140mm in length, compatible with most chassis.

WIDE WORKING ADAPTABILITY

Supports AC 100-240V wide voltage. Operating temperature: 0~50°C.



LUX PT SERIES

Titanium Full Modular ATX 3.1 PSU

1650W / 2500W

ENERGY SAVING & HIGH EFFICIENCY

80 PLUS / PPLP Titanium Certified.

PREMIUM COMPONENTS

Full Japanese capacitors for longer lifespan; pure copper cables safeguard hardware safety.

ADVANCED ARCHITECTURE

Bridge-less APFC Circuit + FULL-Bridge LLC + D2D.

MULTI-GPU COMPATIBILITY

Multiple 12V-2*6 output ports.

COMPACT SIZE

2500W high power with only 165mm length, fits most chassis.

WIDE OPERATING RANGE

LUX P1600T: AC 100-240V. LUX P2500T: AC 200-240V. Operating temperature: 0~50°C.



MAX PB SERIES

Bronze Direct ATX 3.1 PSU

\$ **46.99** ^{550W}

\$ **49.99** ^{650W}

\$ **59.99** ^{750W}

\$ **64.99** ^{850W}

AUTHORITATIVE CERTIFICATION

80 PLUS Bronze Certified.

PREMIUM COMPONENTS

Full Japanese capacitors for long service life, pure copper cables protect hardware safety.

ADVANCED ARCHITECTURE

APFC + Double forward + DC to DC.

WIDE POWER OPTIONS

Available from 550W to 850W.

COMPACT SIZE

Only 140mm in length, fits most chassis.



MAX PG SERIES

Gold Full Modular ATX 3.1 PSU

650W / 750W / 850W

ENERGY SAVING & HIGH EFFICIENCY

80 PLUS / PPLP Gold Certified.

PREMIUM MATERIALS

Full Japanese capacitors for long service life, pure copper cables secure hardware safety.

ADVANCED ARCHITECTURE

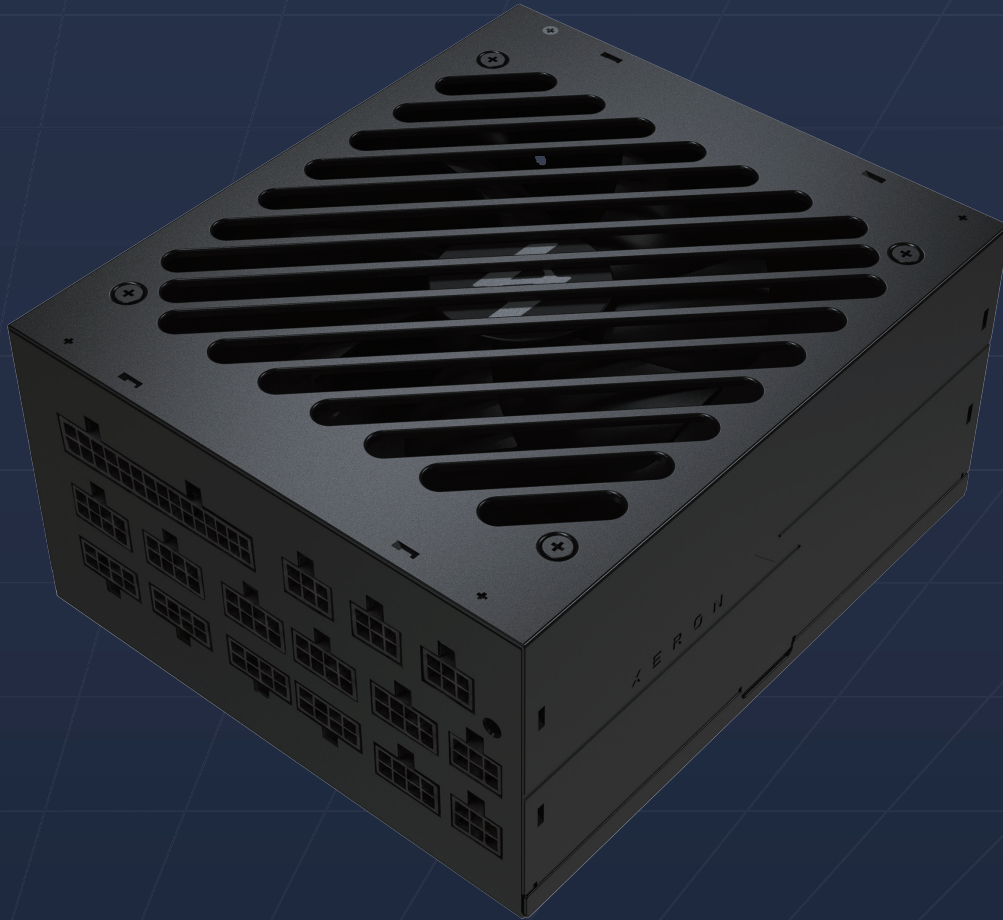
Bridge-less PFC Circuit + Dual Forward + D2D.

COMPACT SIZE

Only 140mm in length.

WIDE WORKING ADAPTABILITY

Supports AC 100~240V wide voltage, operating temperature: 0~40°C.



MAX PG SERIES

Gold Full Modular ATX 3.1 PSU

3000W

ENERGY SAVING & HIGH EFFICIENCY

80 PLUS / PPLP Gold Certified.

PREMIUM COMPONENTS

Full Japanese capacitors ensure long service life. Pure copper cables secure hardware operation.

ADVANCED ARCHITECTURE

Bridge-less APFC Circuit + Half-Bridge LLC + D2D.

MULTI-GPU SUPPORT

Multiple 12V-2*6 output ports.

WIDE COMPATIBILITY

AC 200-240V voltage supported, operating temperature: 0~50°C.

XERON



MAX PS SERIES

Gold Full Modular ATX 3.1 & SFX 4.1 PSU

650W / 750W / 850W / 1000W

ENERGY SAVING & HIGH EFFICIENCY

80 PLUS / PPLP Gold Certified.

PREMIUM COMPONENTS

Full Japanese capacitors for prolonged lifespan. Pure copper cables protect hardware safety.

ADVANCED ARCHITECTURE

APFC + Half-Bridge LLC + D2D.

COMPACT SIZE

Standard SFX form factor, merely 100mm in length.

WIDE WORKING ADAPTABILITY

Supports AC 100~240V wide voltage, operating temperature: 0~40°C.

XERON



MAX PX SERIES

Platinum Full Modular ATX 3.1 & SFX 4.1 PSU

750W / 850W / 1000W

ENERGY SAVING & HIGH EFFICIENCY

80 PLUS / PPLP Titanium Certified.

PREMIUM COMPONENTS

Full Japanese capacitors deliver long service life. Pure copper cables protect hardware safety.

ADVANCED ARCHITECTURE

APFC + Half-Bridge LLC + D2D.

COMPACT SIZE

SFX form factor, only 104mm in length.

WIDE WORKING ADAPTABILITY

Supports AC 100~240V wide voltage, operating temperature: 0~40°C.

XERON



LUX E71

Liquid Metal Thermal Paste

\$ **15.99**

SUPERIOR PERFORMANCE

LUX E71 is pure liquid metal thermal interface material with thermal conductivity up to 26 W/m·K, far exceeding traditional thermal grease.

ULTRA LOW THERMAL RESISTANCE

Thermal resistance determines heat transfer speed. LUX E71 features ultra-low thermal resistance of 0.01 K·cm²/W for efficient heat conduction.

LONG-LASTING STABILITY

Free of volatile components, maintains steady high performance permanently.

SAFETY PROTECTION

Liquid metal is electrically conductive. Specially designed protective accessories are standard equipped for safe application.

XERON



MAX E72

Liquid Metal Composite Thermal Silicone Grease

\$ **11.99**

SUPERIOR PERFORMANCE

MAX E72 liquid metal compound thermal grease reaches thermal conductivity of 9.6 W/m·K.

ULTRA LOW THERMAL RESISTANCE

Boasts thermal resistance as low as 0.036 K·cm²/W.

EASY APPLICATION

Features excellent adhesion, different from conventional high-performance thermal grease.

SAFETY PROTECTION

Liquid metal is conductive. Specially designed protective kits come standard for safe use.

XERON



NEX E75

NEX E72

Low Thermal Resistance High-Performance Thermal Grease

NEX E75
\$ 4.99

NEX E72
\$ 2.99

SAFE & STABLE

NEX E75/E72 is insulated thermal grease for secure use.

EXCELLENT THERMAL CONDUCTIVITY

Thermal conductivity: 3.5W/m·K, minimum thermal resistance: 0.05 K·cm²/W, compatible with various CPUs.

EASY APPLICATION

Features excellent adhesion, different from conventional high-performance thermal grease.

XERON



MAX E87

Smart Secondary Display

\$ 39.00

MULTI-SCENARIO USE

Built-in magnet and stand for flexible placement.

HIDDEN PORT DESIGN

Connect to host with just one USB cable.

CUSTOMIZABLE THEMES

Freely switch themes via supporting software.

XERON



MAX E20

Visualized Power Supply Tester

\$19.99

EASY OPERATION

No professional skills required. Simply connect AC power and matching cables to start quick power supply inspection.

CLEAR DISPLAY

Equipped with segment screen and LCD panel to show all parameters instantly.

POWERFUL COMPATIBILITY

Fully compatible with 12V-2*6, Molex, SATA, CPU, PCIE and MB 24Pin interface tests.



C LAB Art Gallery PC Case

Integrated sheet metal main frame design and production process

Large C-shaped lightweight suspension design

Independent and unobstructed air intake channels for CPU, GPU and PSU respectively

Integrated C-shaped appearance surface, compatible with replaceable materials and color schemes

Easy installation design for fans and water cooling systems



S LAB Art Gallery PC Case

Integrated sheet metal frame design and production process

Large S-shaped lightweight suspension design. Multiple combinations of main frame and outer shells, supporting open chassis, sea-view chassis and louvered high-performance chassis with diversified material applications.

Independent and unobstructed air intake channels for CPU, GPU and PSU respectively

Innovative fully top-pull outer shell opening design, greatly enhancing user experience.